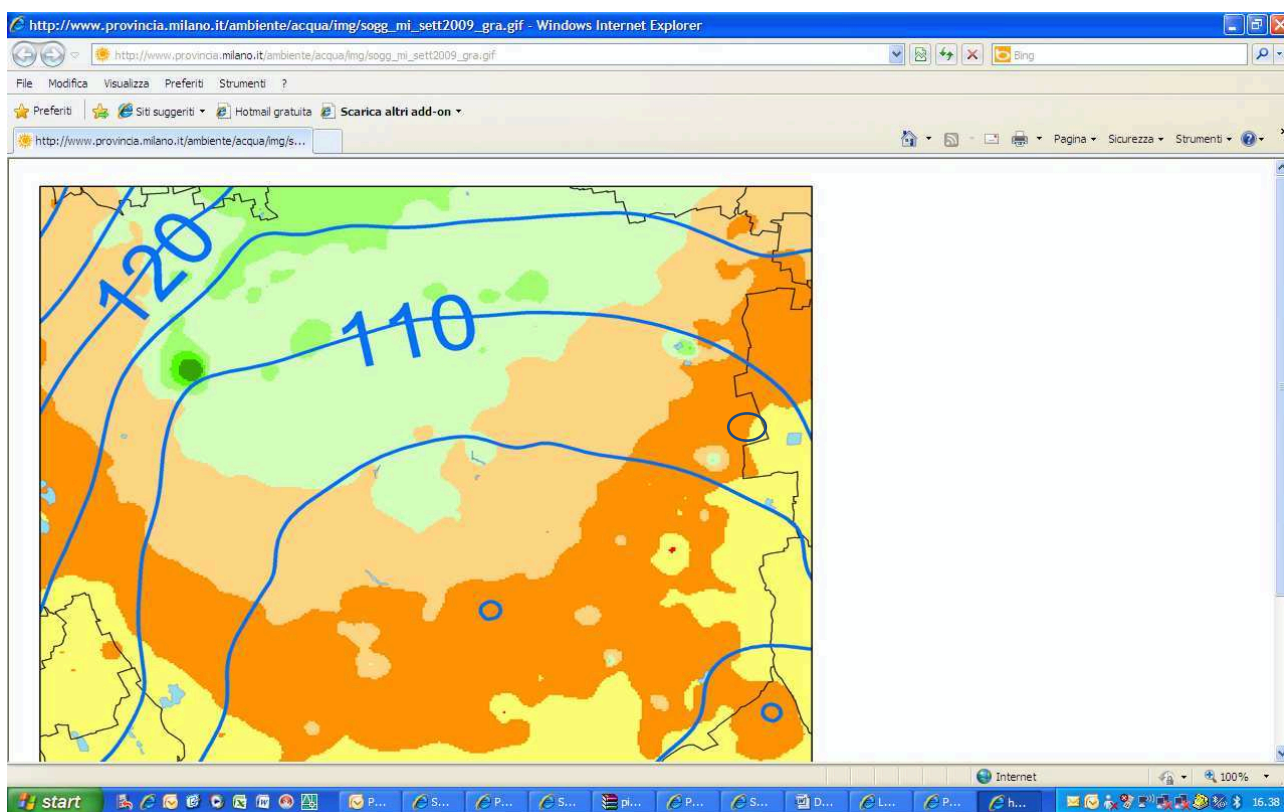


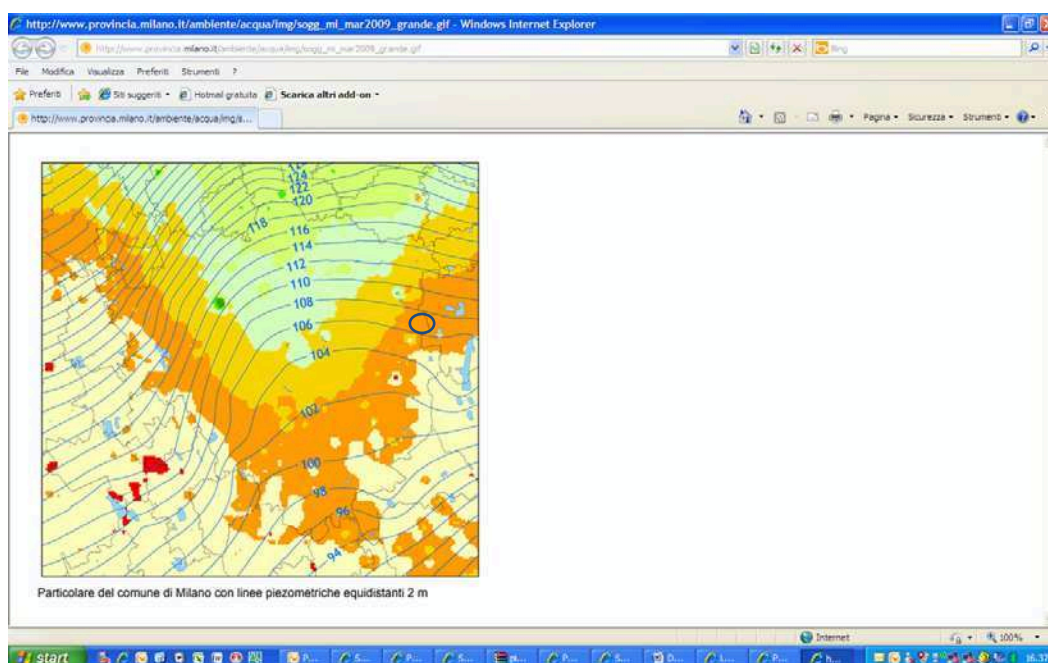
ALLEGATO 4

**CARTE PIEZOMETRICHE E DELLA SOGGIACENZA DEL PRIMO
ACQUIFERO**

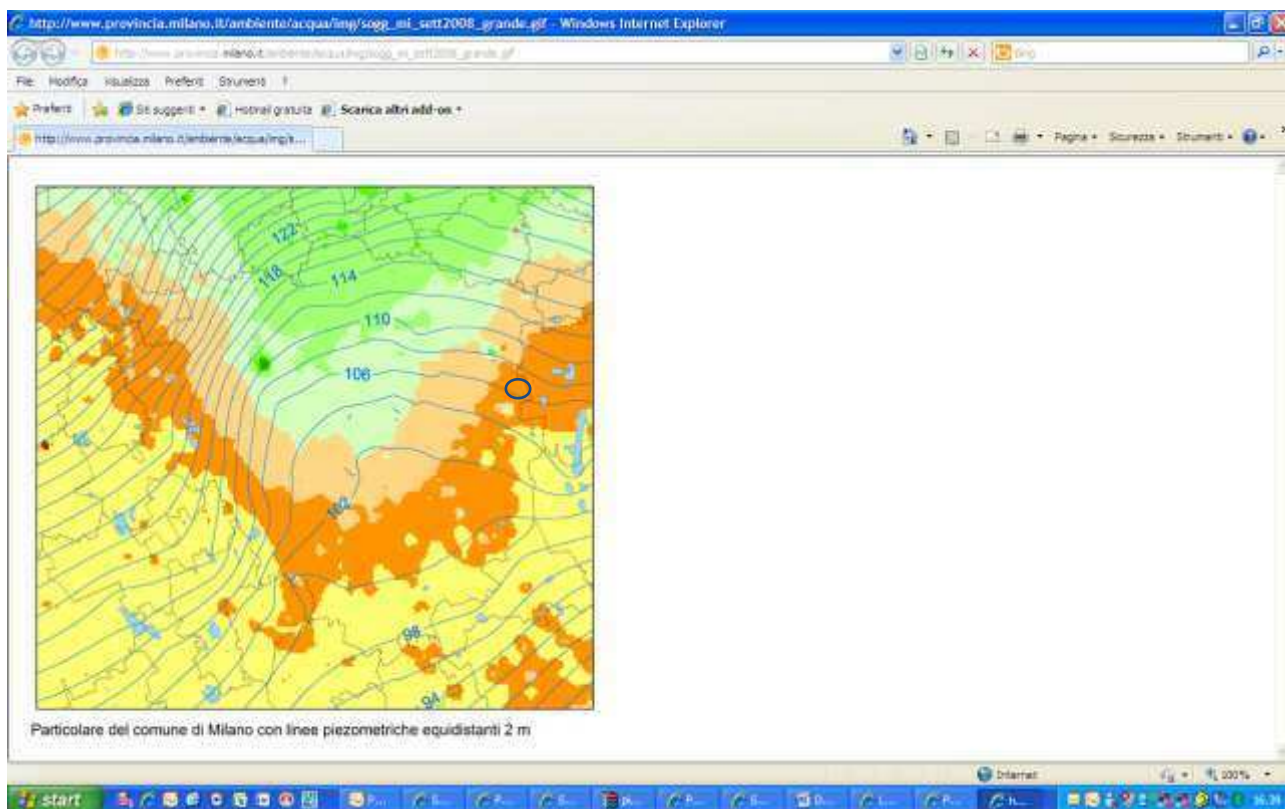
Carte Piezometriche e della soggiacenza del primo acquifero
(Dati reperiti dal sito della Provincia di Milano)
con il cerchietto rosso o blu è stata indicata l'area d'interesse



SETTEMBRE 2009



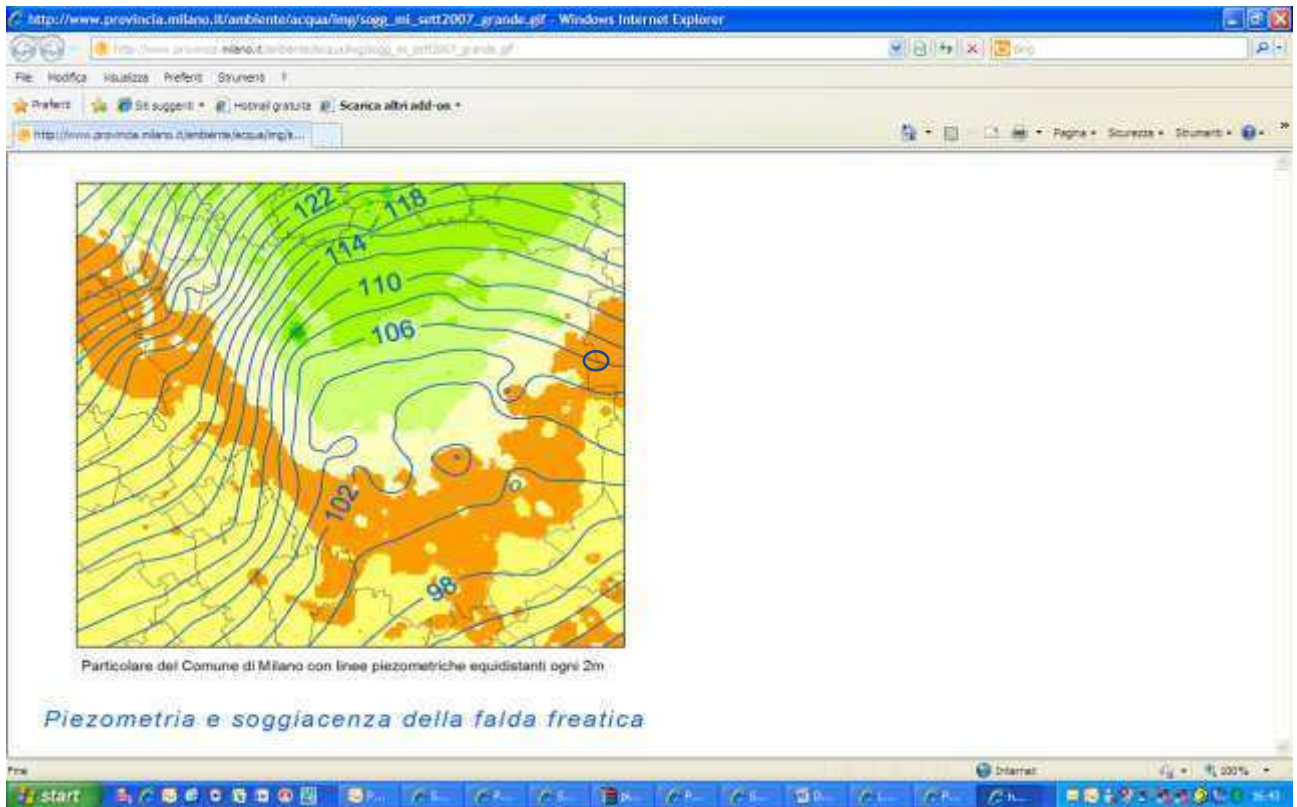
MARZO 2009



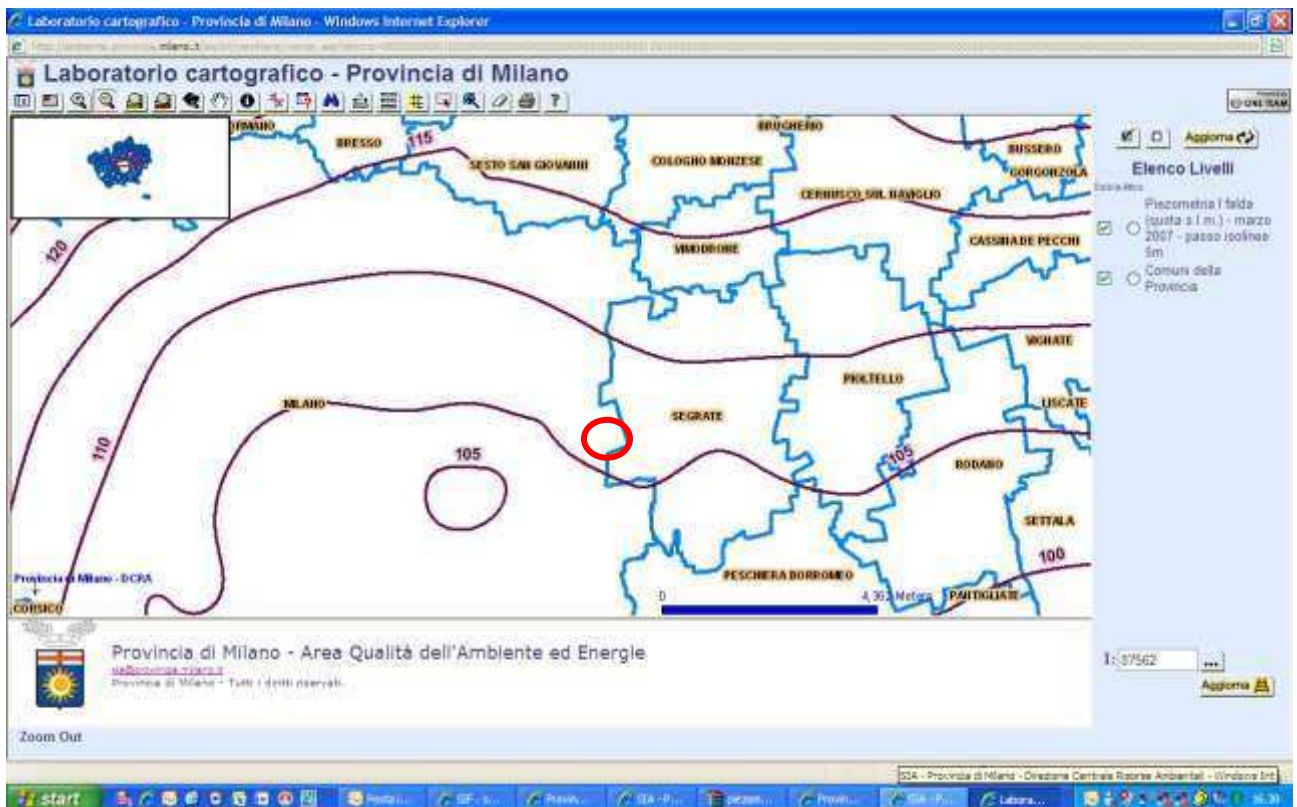
SETTEMBRE 2008



MARZO 2008



SETTEMBRE 2007



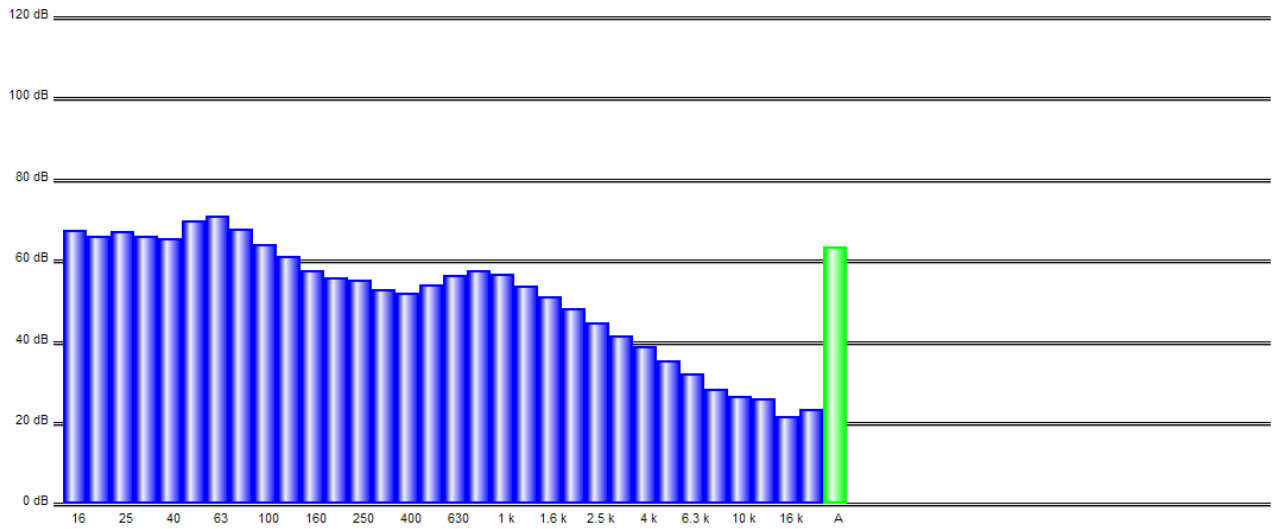
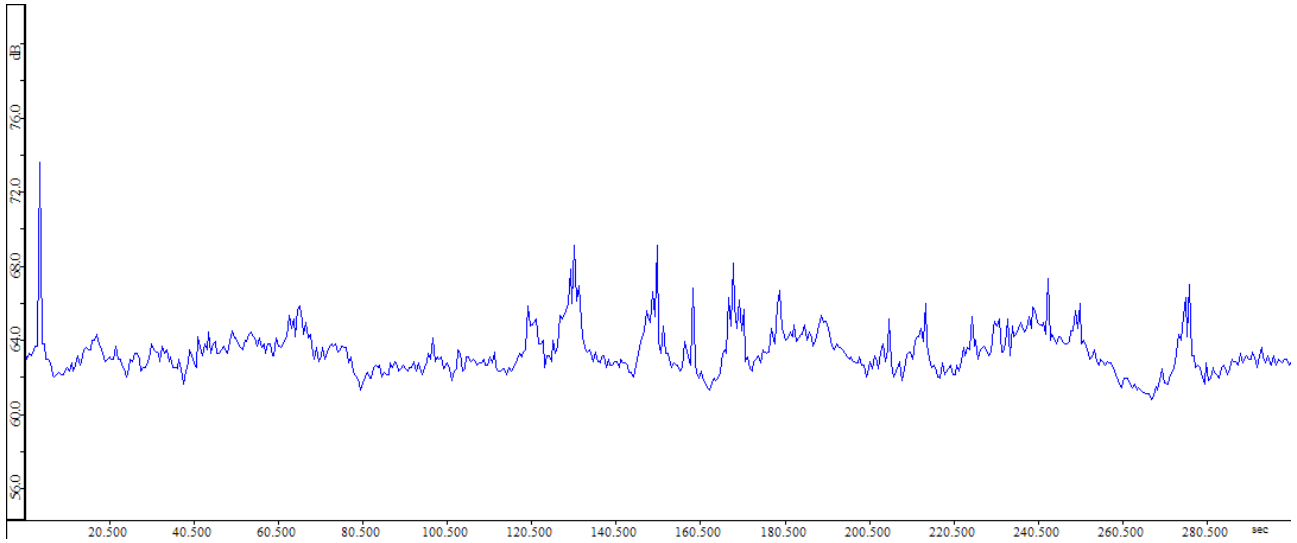
Marzo 2007

ALLEGATO 5
TRACCIATI DELLE MISURE

MISURA 1

LAeq 63.3 dB

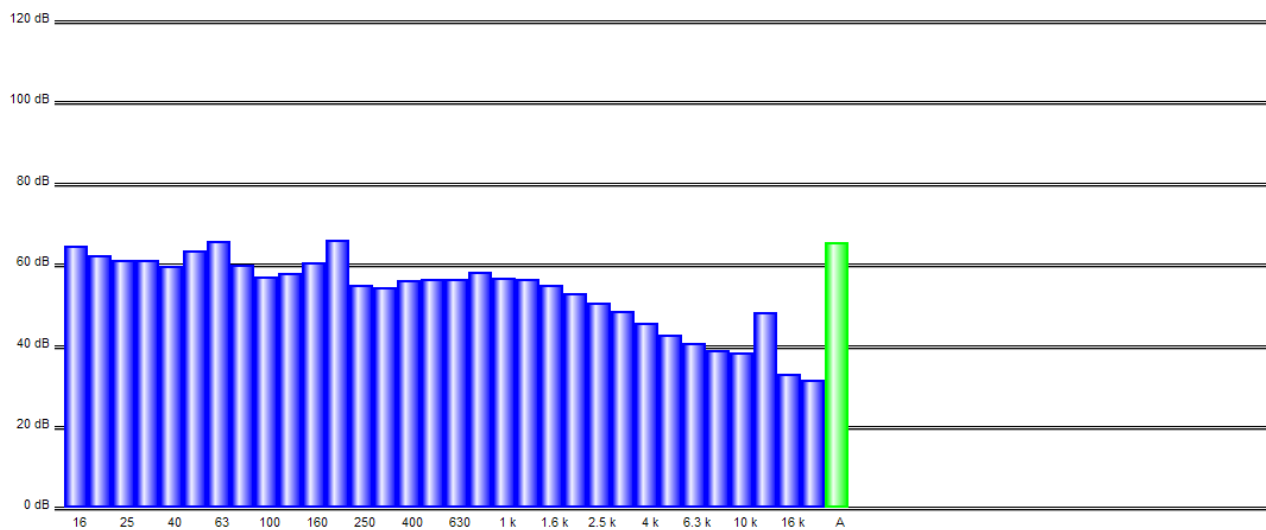
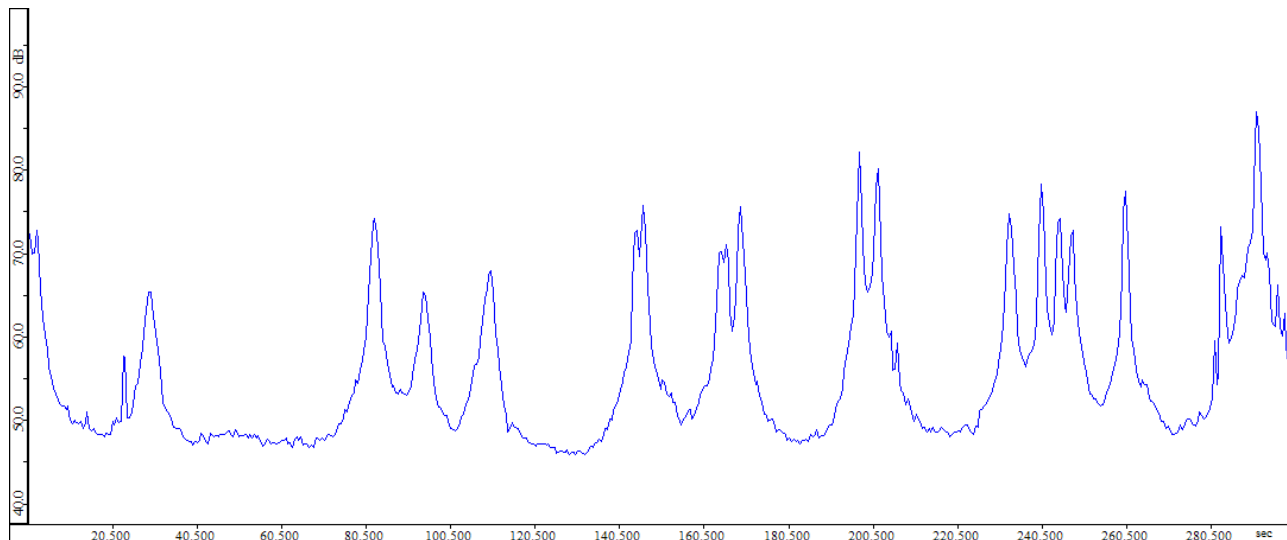
L95 61.7 dB



MISURA 2

LAeq 65,2 dB

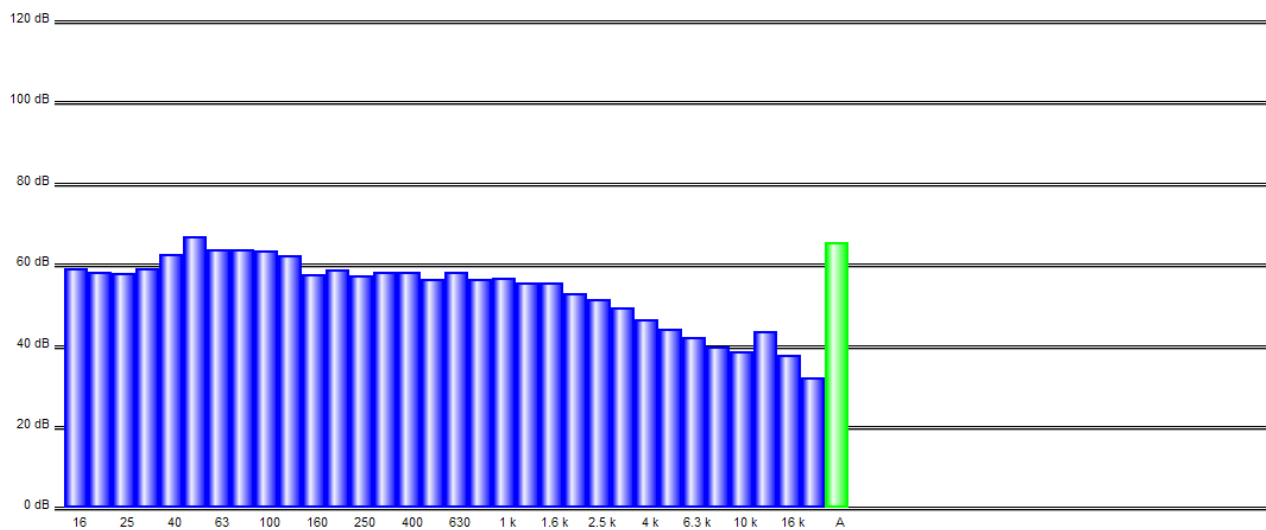
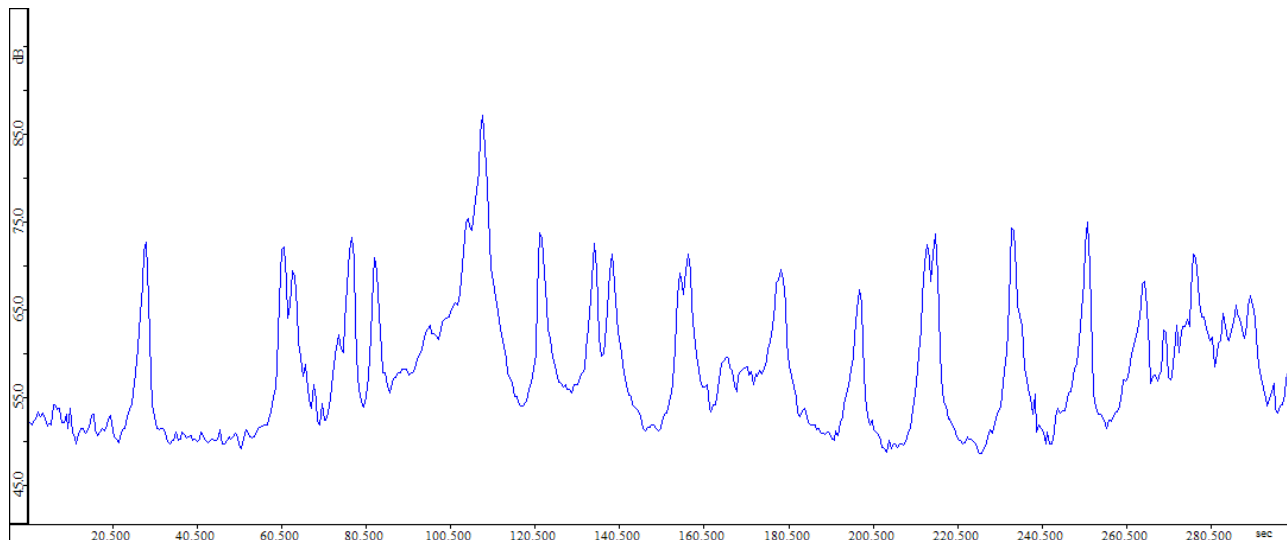
L95 47,0 dB



MISURA 3

LAeq 65,2 dB

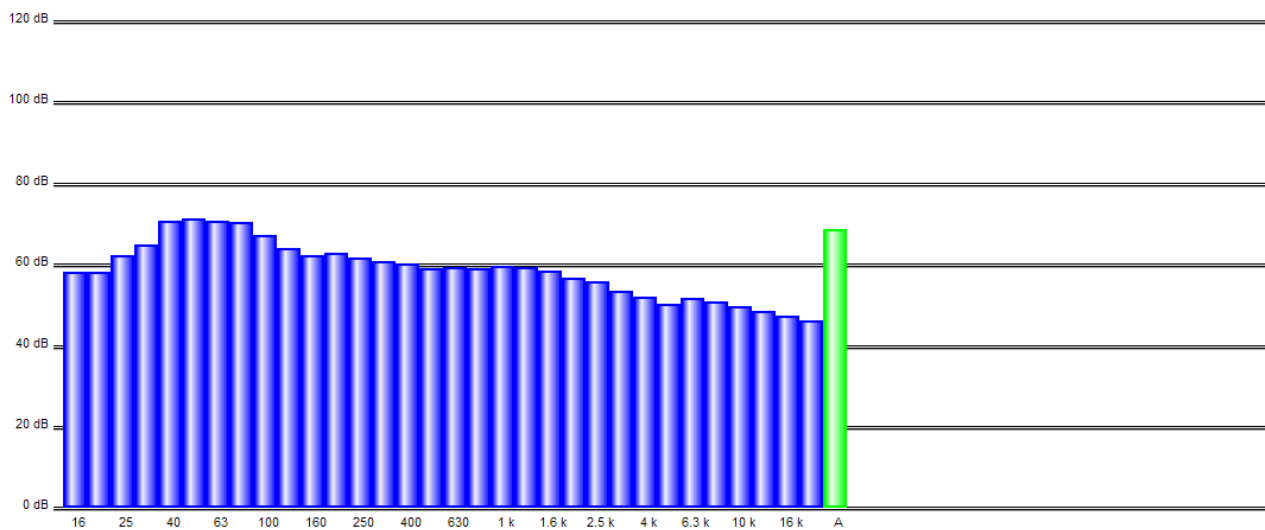
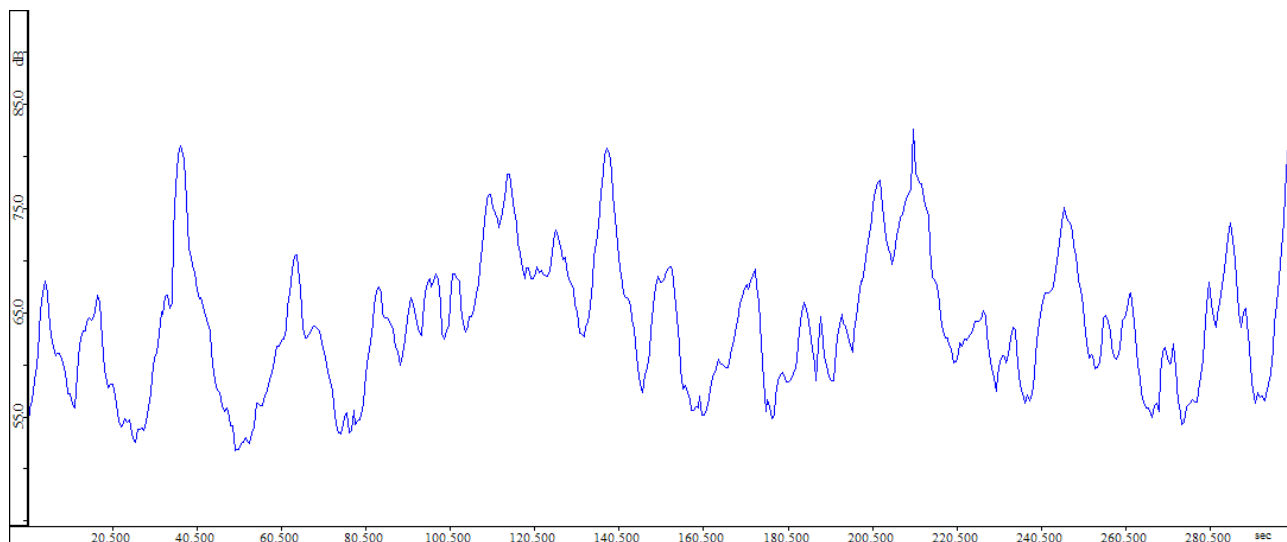
L95 49,9 dB



MISURA 4

LAeq 68,4 dB

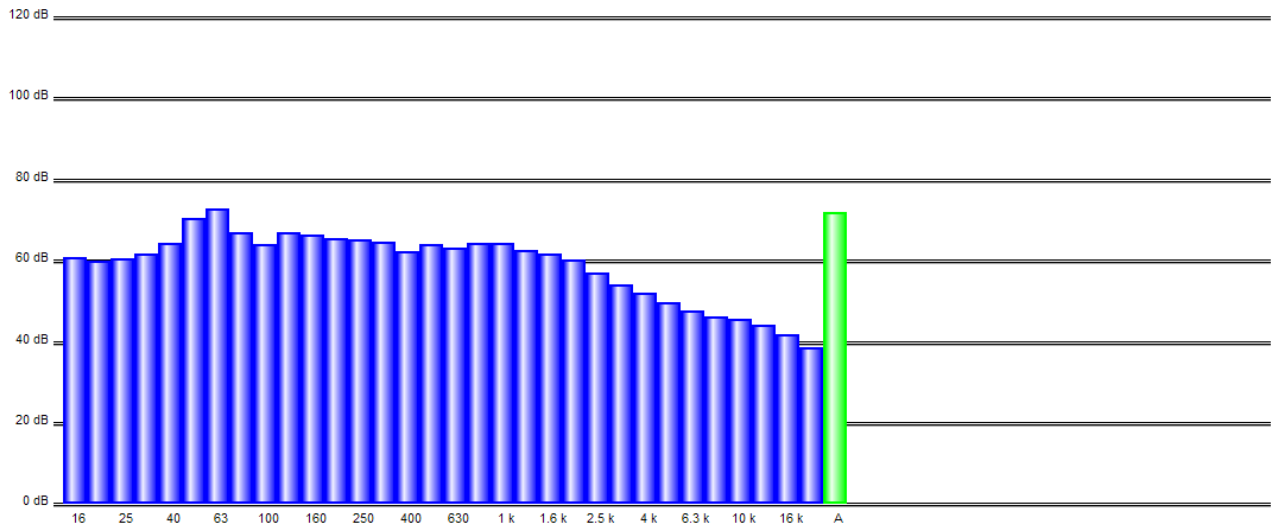
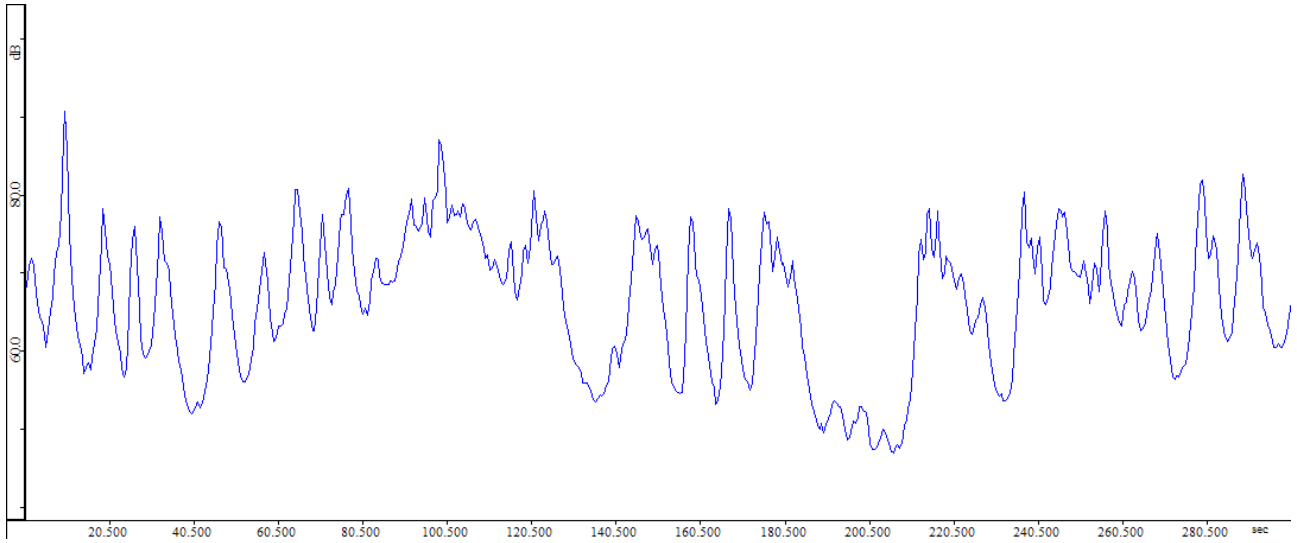
L95 54,4 dB



MISURA 5

LAeq 71,8 dB

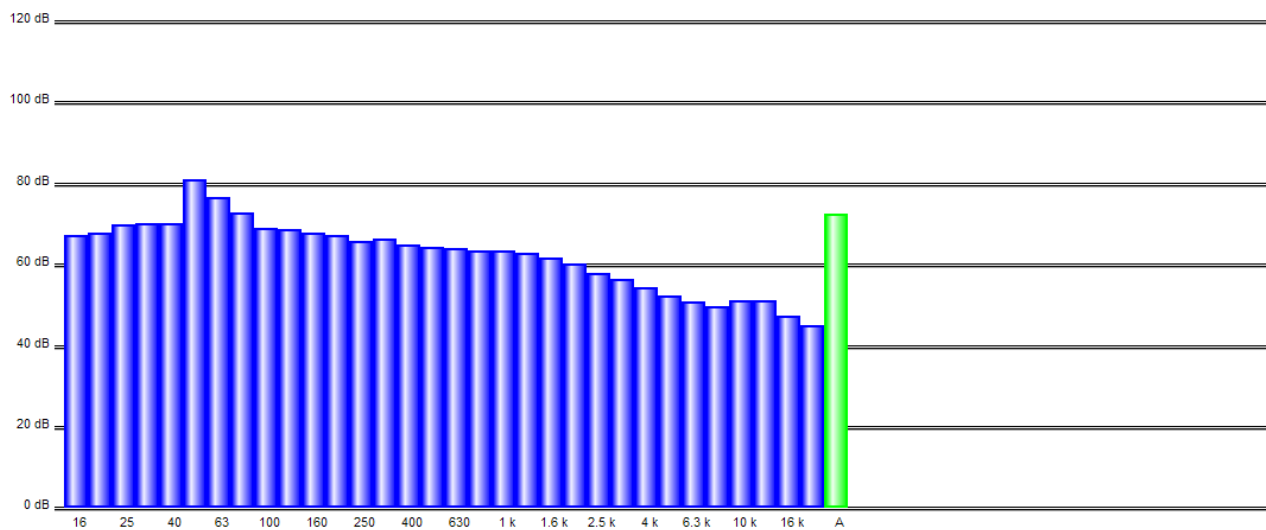
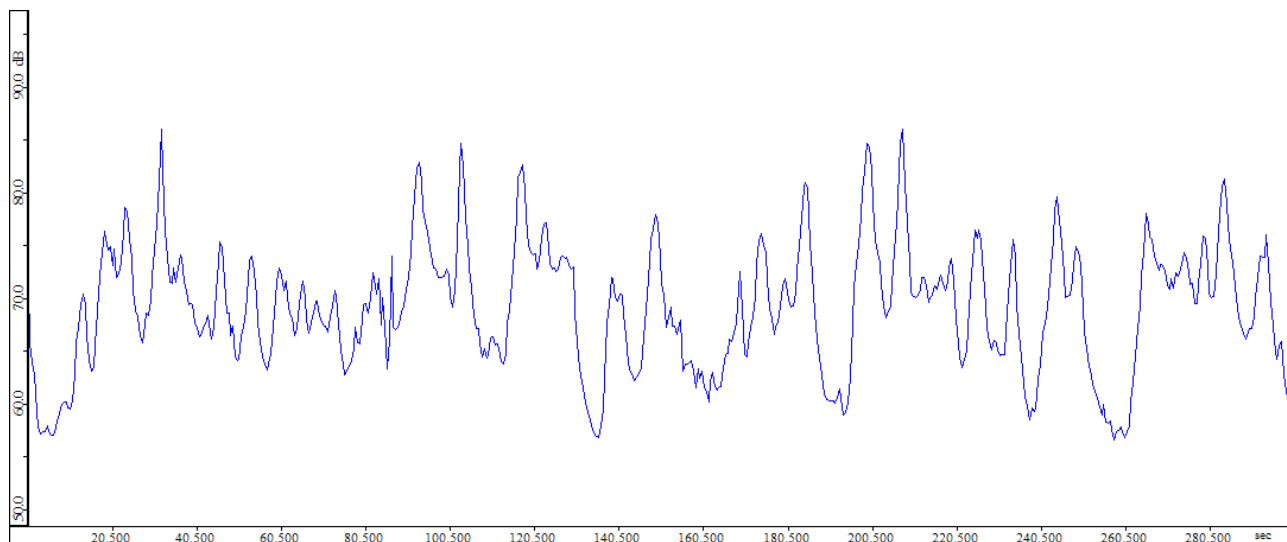
L95 51,2 dB



MISURA 6

LAeq 72,2 dB

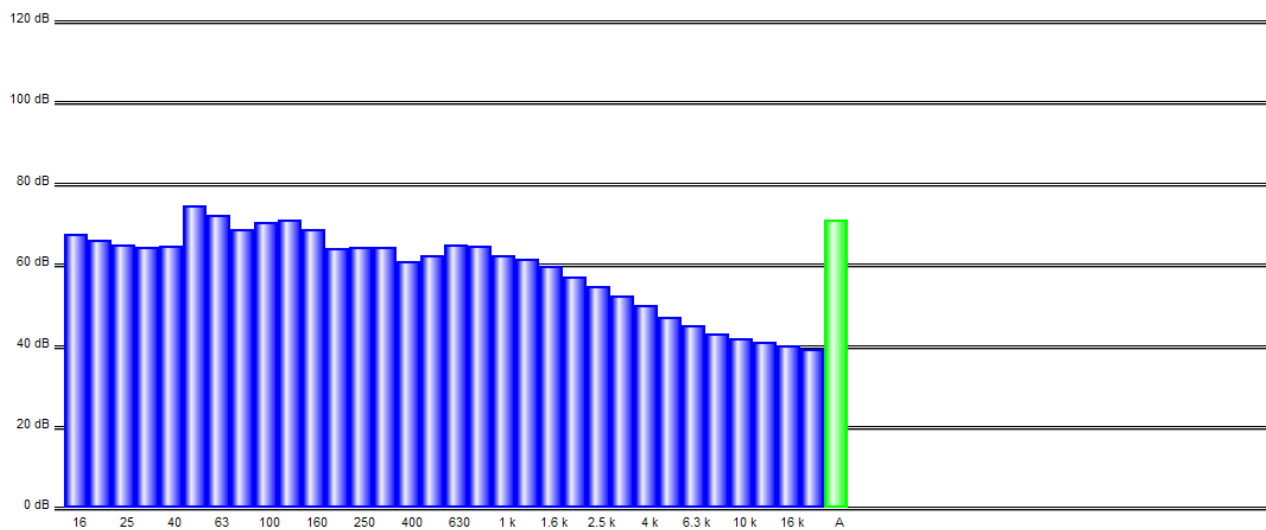
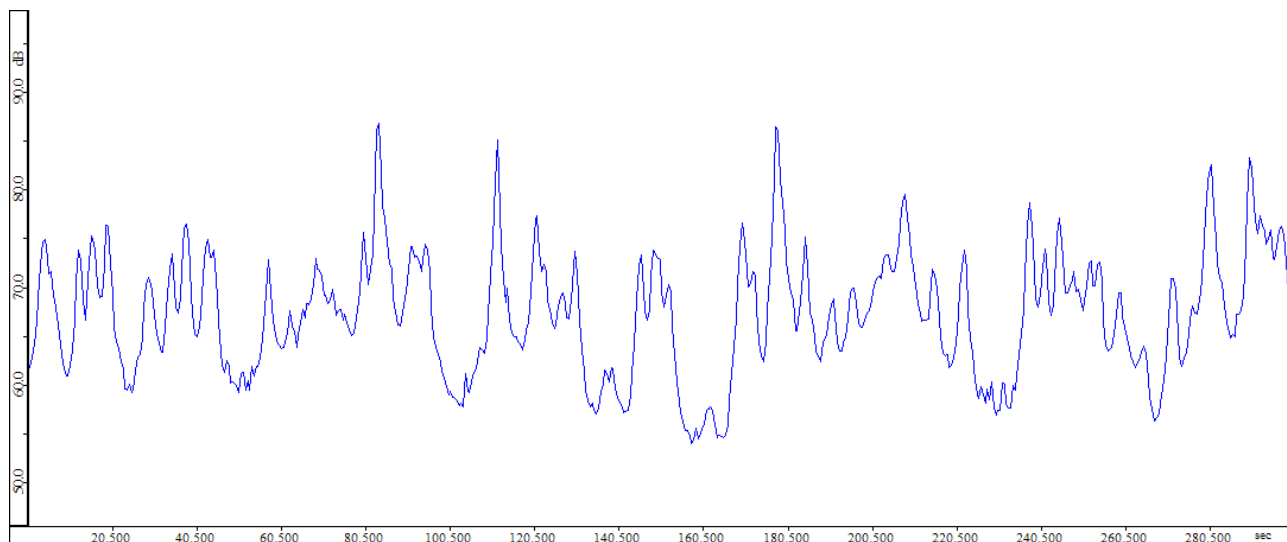
L95 58,8 dB



MISURA 7

LAeq 70,9 dB

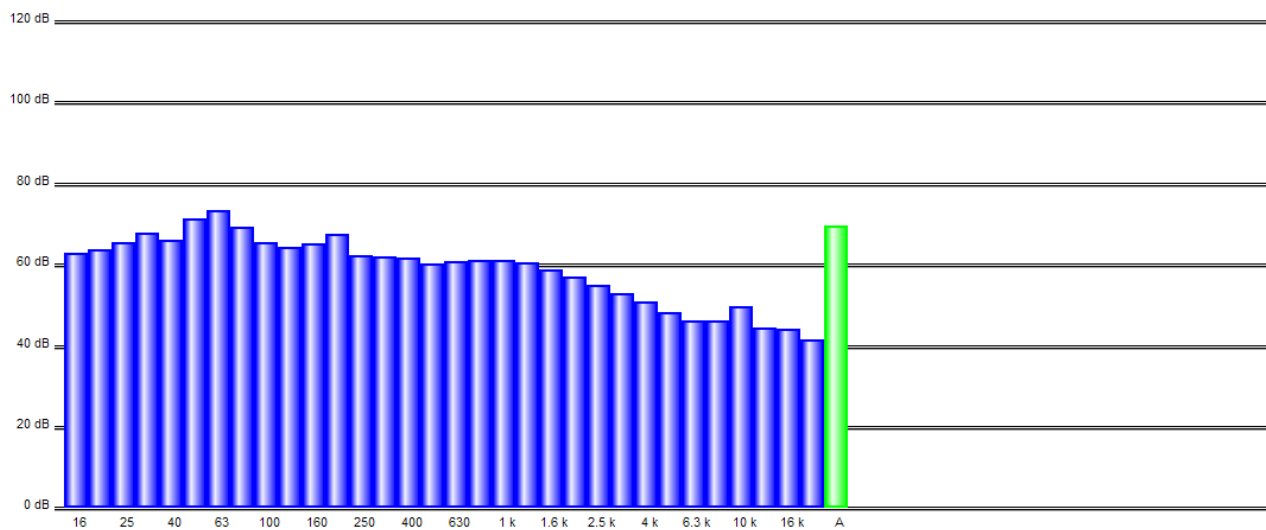
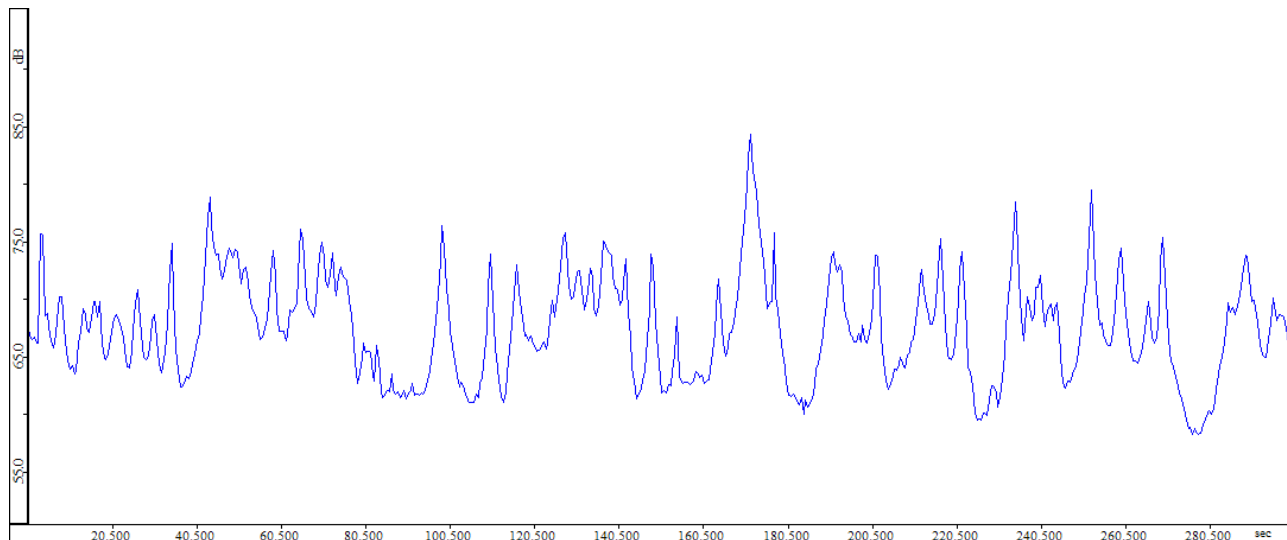
L95 57,2 dB



MISURA 8

LAeq 69,3 dB

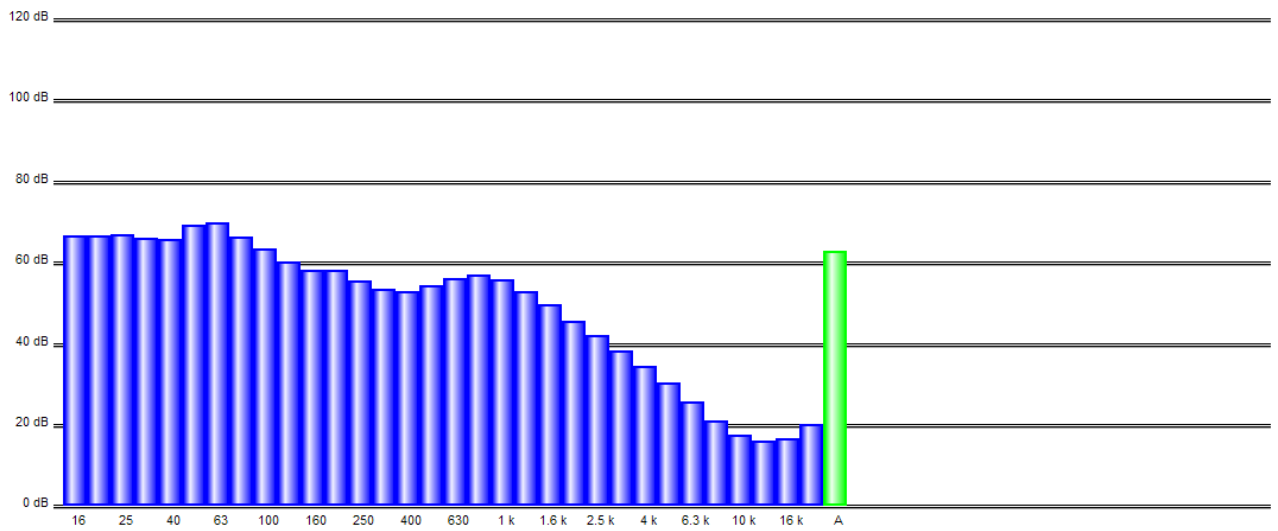
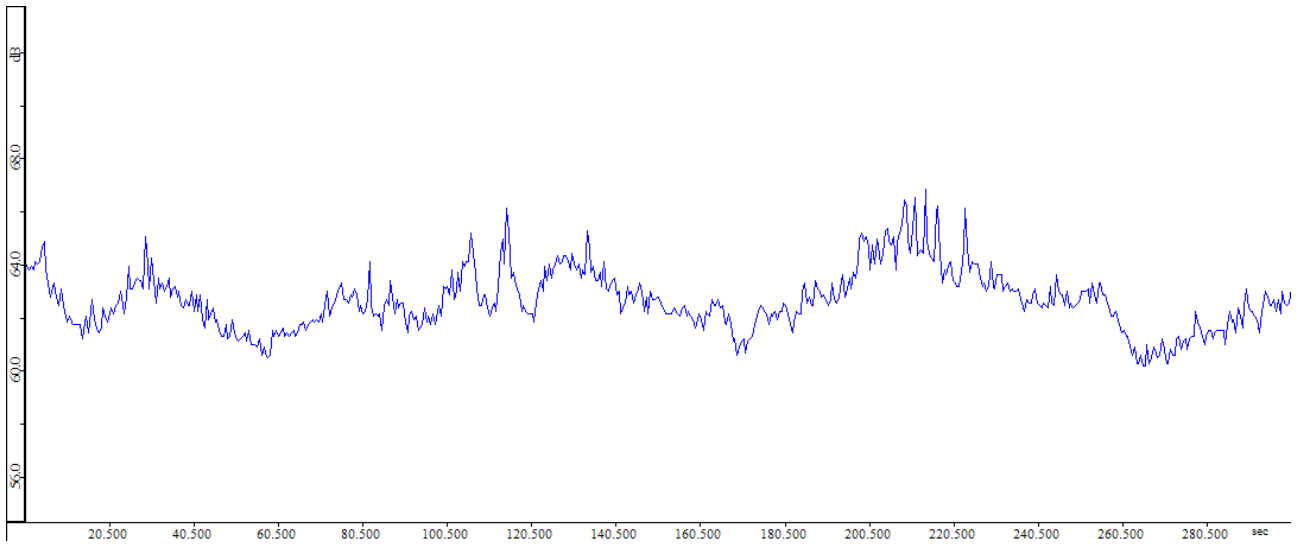
L95 61,0 dB



MISURA 9

LAeq 62,5 dB

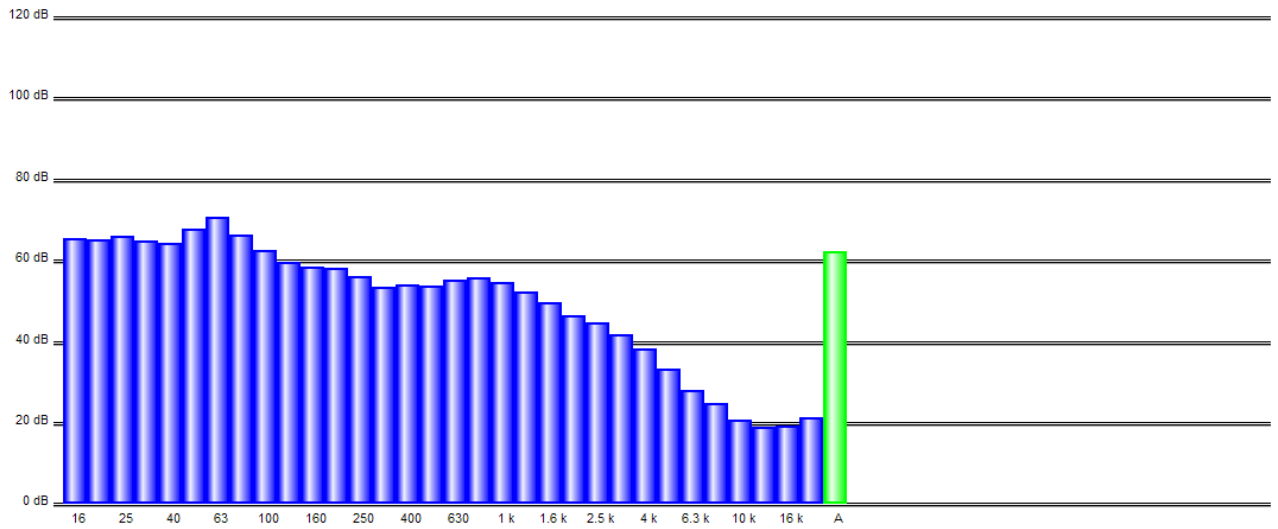
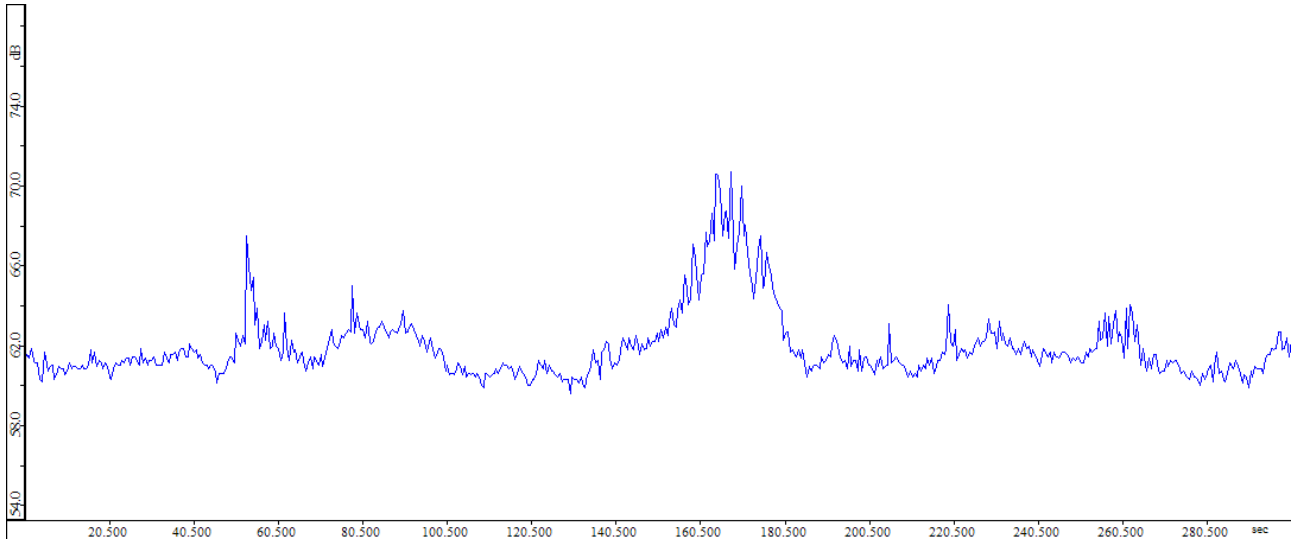
L95 60,9 dB



MISURA 10

LAeq 62,1 dB

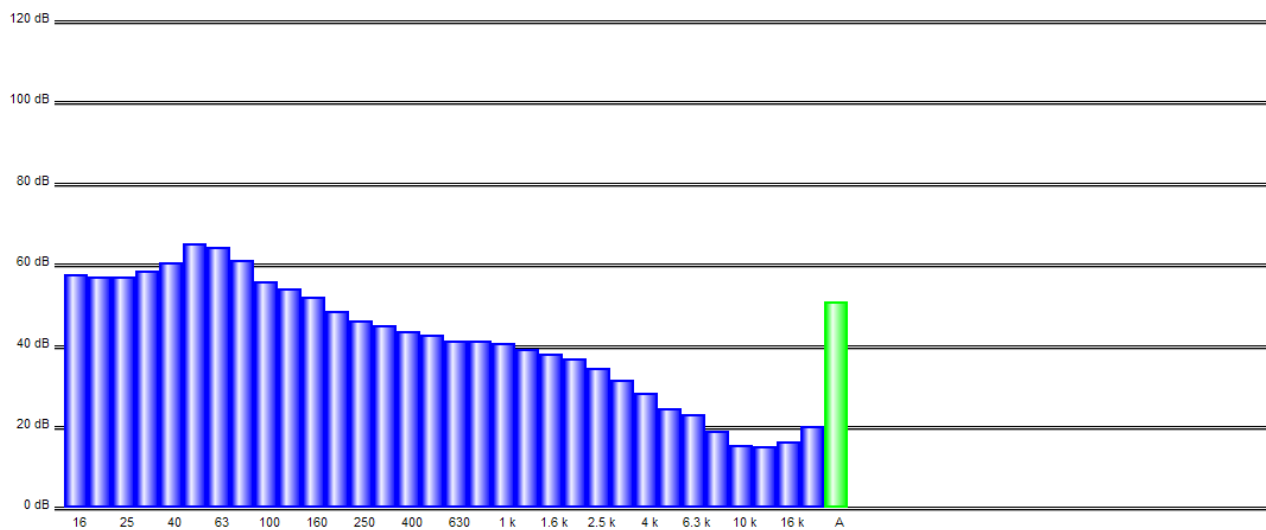
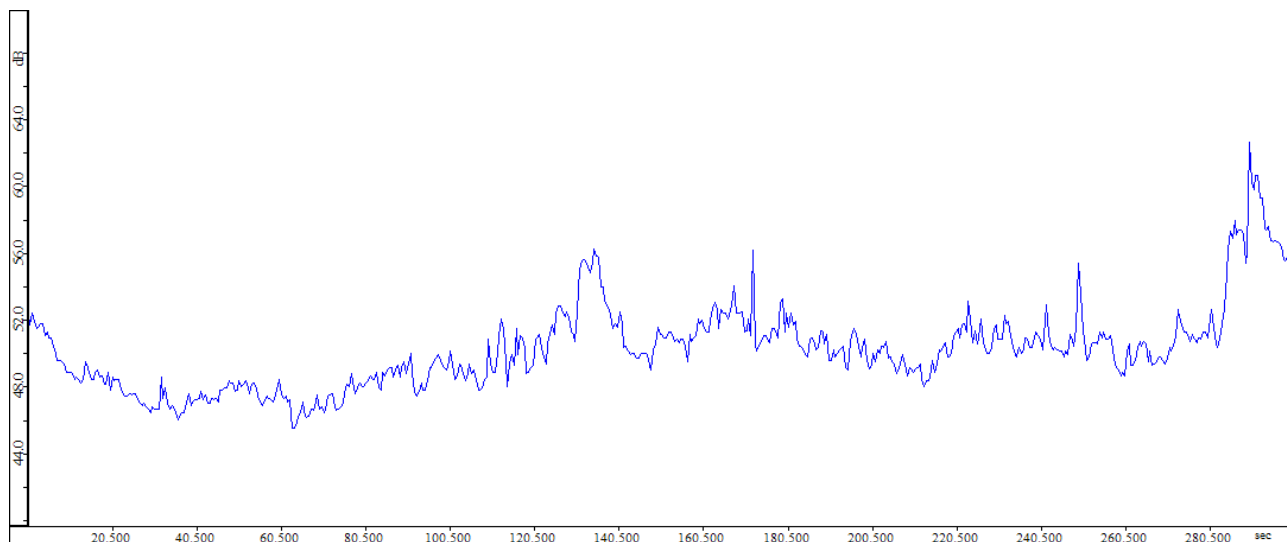
L95 60,2 dB



MISURA 11

LAeq 50,8 dB

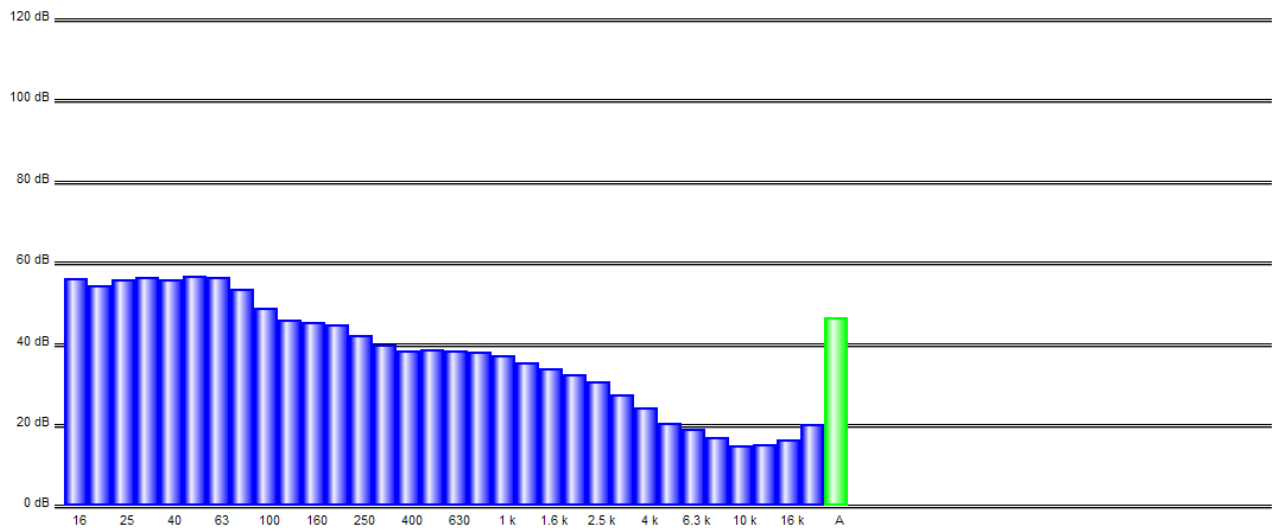
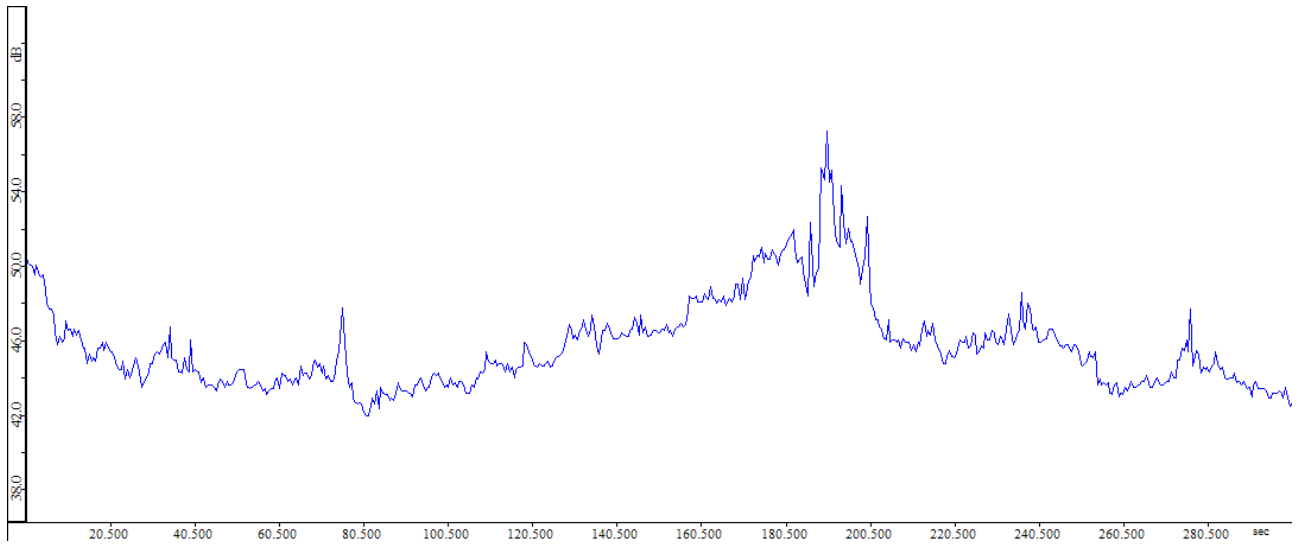
L95 46,8 dB



MISURA 12

LAeq 46,3 dB

L95 43,0 dB

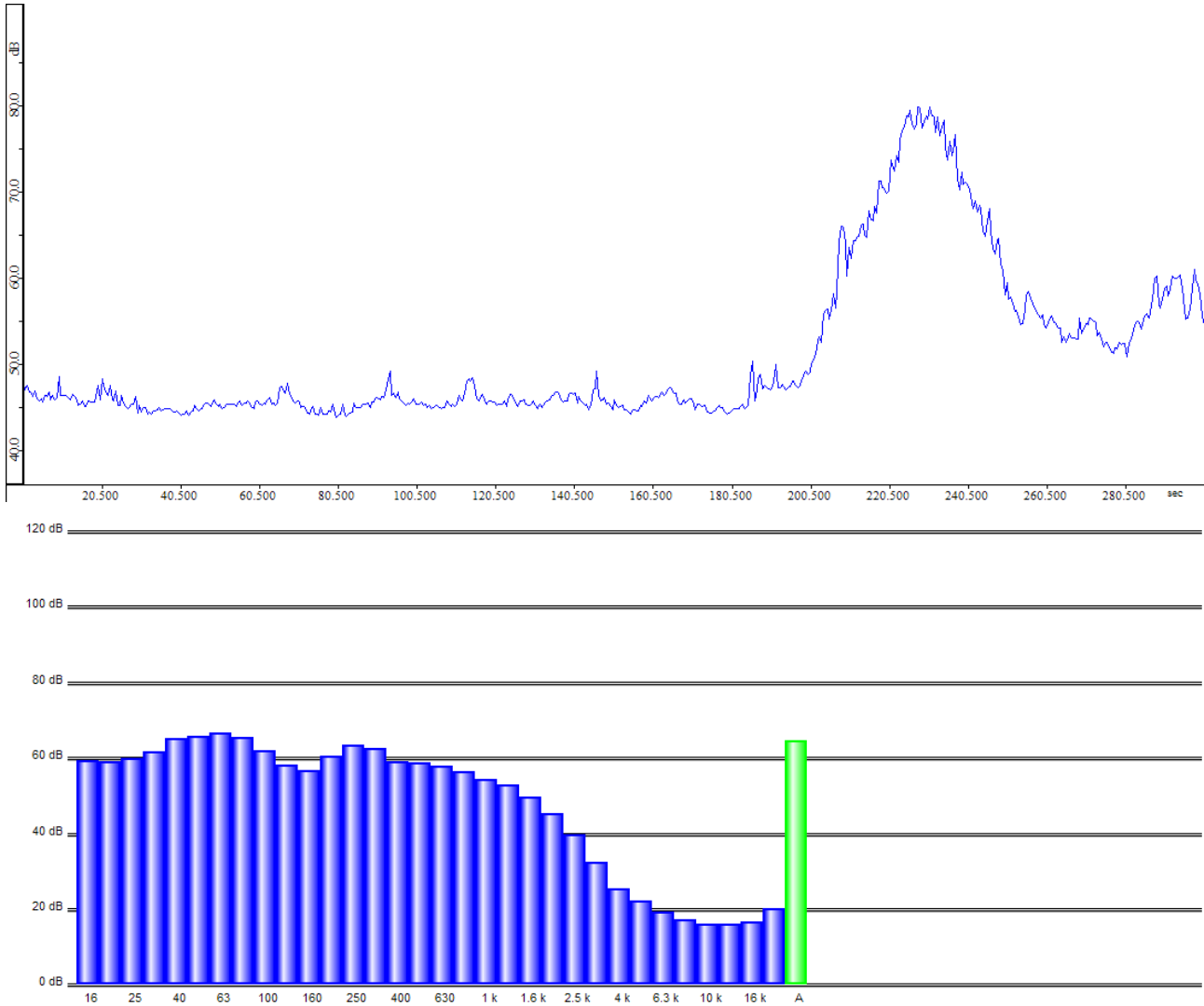


MISURA 13

LAeq 45,5 dB

L95 44,2 dB

N.B. Nel profilo acustico temporale della misura è visibile il passaggio di un aereo in decollo dall'Aeroporto di Linate. Il rumore del transito non è compreso nel dato di cui sopra.



ALLEGATO 6
RIFIUTI INNSE

GESTIONE DEI RIFIUTI SPECIALI

Codice CER	RIFIUTO	DEPOSITO TEMPORANEO	UBICAZIONE	DESTINAZIONE
12 01 01	limatura, scaglie e polveri di materiali ferrosi	cassone chiuso	esterno officina	recupero
12 01 03	limatura e trucioli di materiale non ferroso	contenitori in acciaio	interno officina	recupero
12 01 09*	emulsioni e soluzioni per macchinari, non contenenti alogeni (olio emulsionato da taglio esausto)	cisternette 1000 lt	esterno sotto pensilina su vasche di contenimento	smaltimento
15 01 01	imballaggi in carta e cartone	cassone chiuso	esterno officina	recupero
15 01 03	imballaggi in legno	sciolto	esterno officina senza pensilina	recupero
15 01 04	imballaggi metallici	sciolto su pallet	interno officina	recupero
15 01 06	imballaggi in materiali misti	cassone aperto	esterno officina	smaltimento
15 02 02*	assorbenti, materiali filtranti (inclusi filtri olio) stracci ed indumenti protettivi	scatole cartone	interno officina	smaltimento
15 02 03	assorbenti, materiali filtranti, stracci e indumenti protettivi, diversi di quelli di cui alla voce 15 02 02	big bag	interno officina	smaltimento
17 04 05	ferro e acciaio (rottame)	cassone aperto	esterno officina	recupero
08 02 18	toner per stampa esauriti diversi di quelli di cui alla voce 08 03 17	sciolto in scatole di cartone	interno officina	recupero